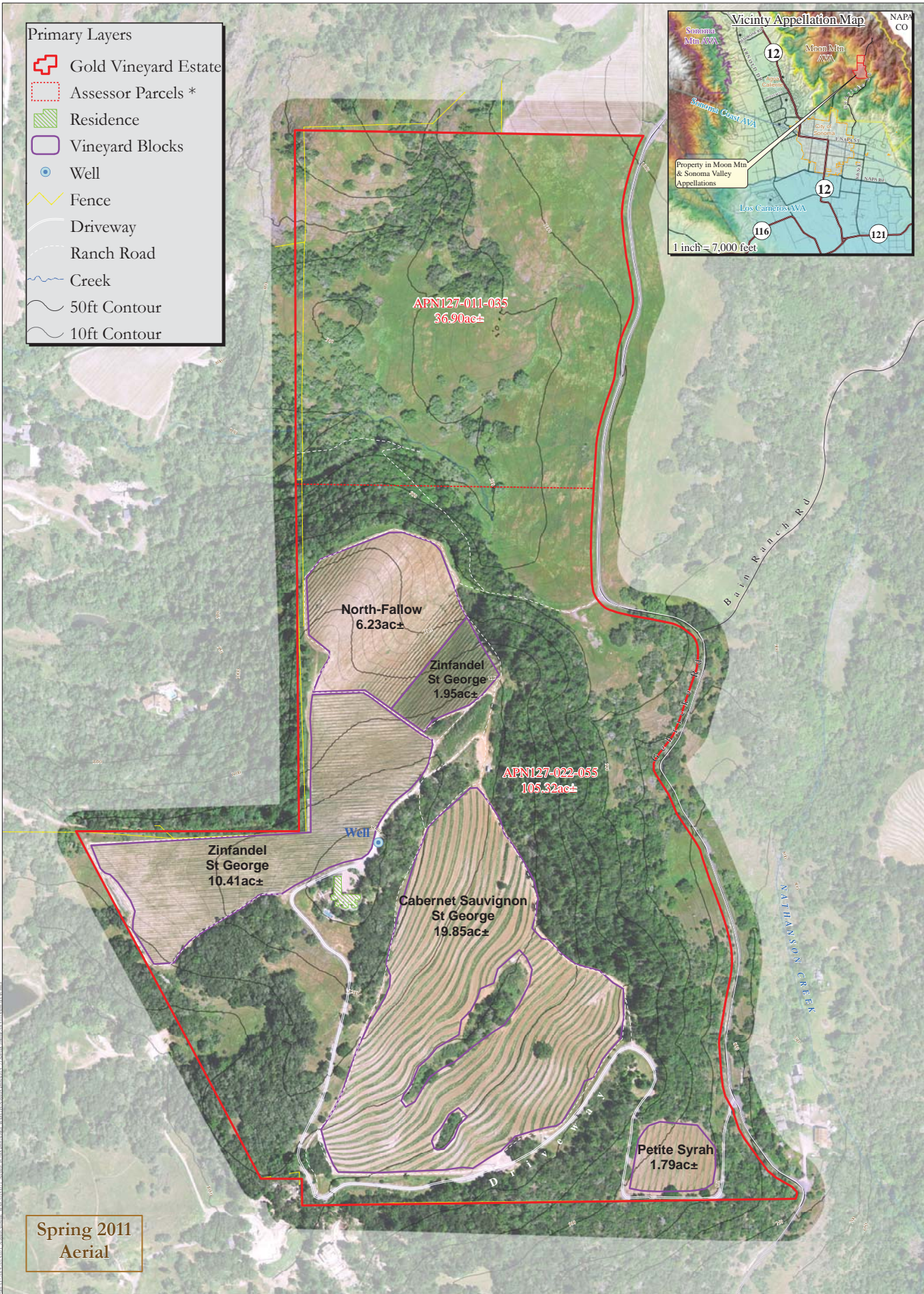
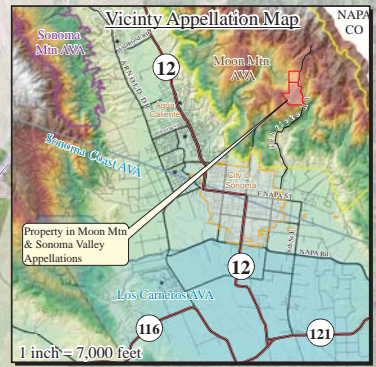


- Primary Layers**
- Gold Vineyard Estate
 - Assessor Parcels *
 - Residence
 - Vineyard Blocks
 - Well
 - Fence
 - Driveway
 - Ranch Road
 - Creek
 - 50ft Contour
 - 10ft Contour



Spring 2011
Aerial

NOTE: THIS MAP WAS CREATED BY RAY CARLSON & ASSOCIATES, INC. STREET AND CREEK DATA PROVIDED BY COUNTY OF SONOMA, SUBJECT TO STANDARD CONDITIONS. ALL DATA DERIVED FROM SONOMA VEG MAP PRODUCT (Costs & Road Layer added to fit the data).

BOUNDARIES SHOWN FOR REFERENCE PURPOSES ONLY. BOUNDARY LINES SHOWN ARE PER FIELD AND RECORD INFORMATION. NO LIABILITY IS ASSUMED OR IMPLIED FOR THE LOCATION OF BOUNDARY LINES HEREON.

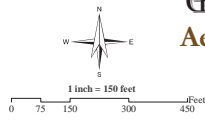
USE OF THIS PRODUCT IS COVERED BY COPYRIGHT LAWS.

RAY CARLSON & ASSOCIATES, INC. IS TO BE HELD HARMLESS FOR ANY AND ALL DISCREPANCIES OF DISTANCE AND GRAPHIC DISTORTION RELATING TO THE USE AND DEPENDENCE UPON THIS REPRESENTATION.

ORTHOPHOTOGRAHY (2011), BUILDING FOOTPRINT AND LEADER ELEVATION DATA (2011) PER SONOMA VEG MAP.

Appellations trademarks by Ray Carlson & Associates, Inc. per TTR designations.

*ACRAGE PER BOUNDARY SURVEY IN PROGRESS BY RAY CARLSON AND ASSOCIATES, INC. (11/16/15)

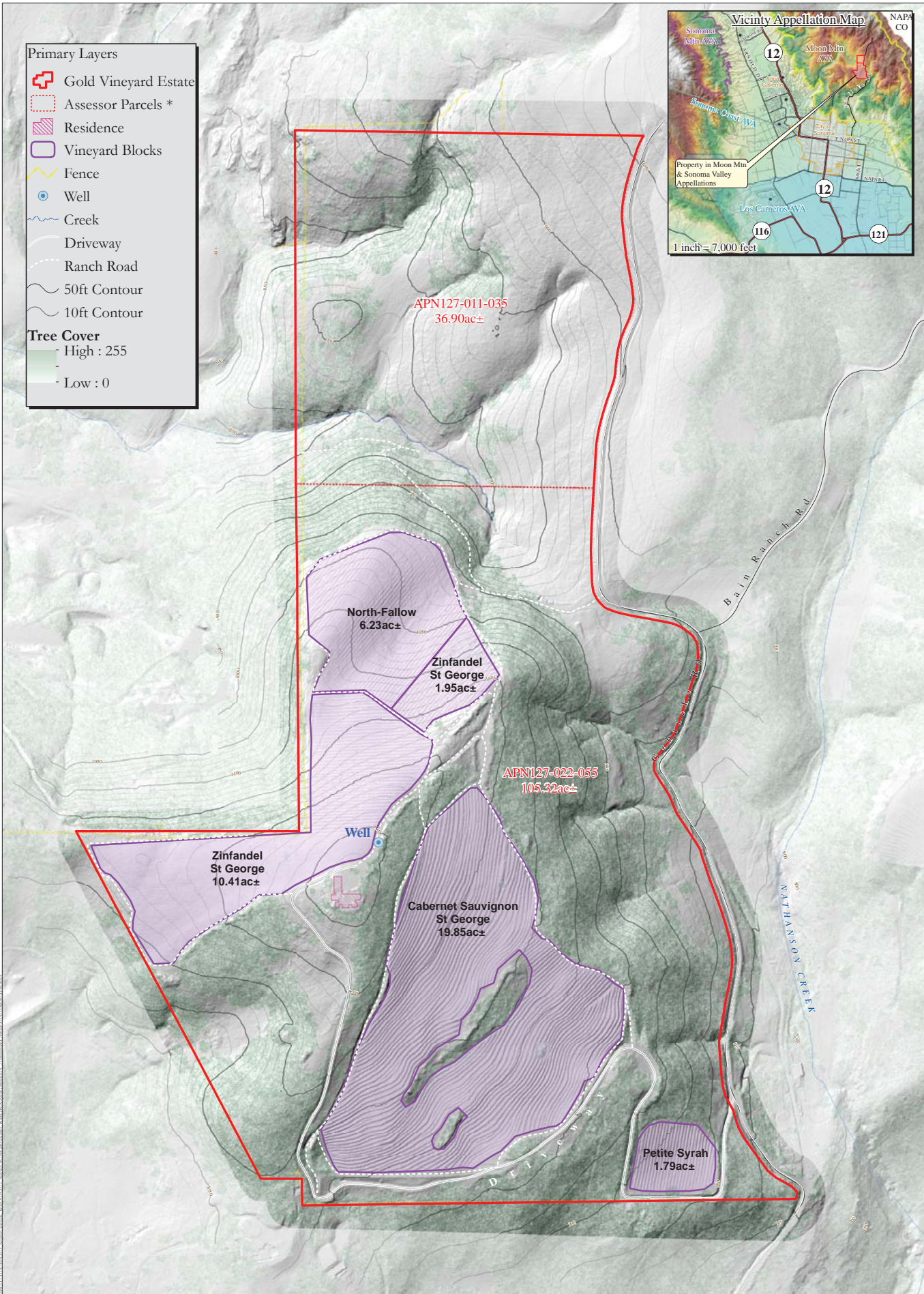
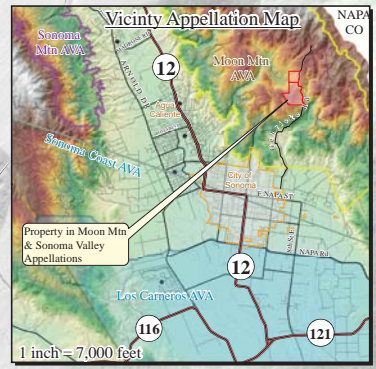


GOLD VINEYARD ESTATE
Aerial, Vineyard & Contour Map
 16700 Gehricke Road
 Sonoma, CA
 APN 127-022-055 & 127-011-035



RAY CARLSON AND ASSOCIATES, INC.
 Mapping for a Better World™
 SURVEYING • MAPPING • GIS • CONSULTING
 411 RUSSELL AVENUE SANTA ROSA, CALIFORNIA 95403
 (707) 528-7649 • RCMAPS.COM
 ©2015, Ray Carlson and Associates, Inc.

- Primary Layers**
- Gold Vineyard Estate
 - Assessor Parcels *
 - Residence
 - Vineyard Blocks
 - Fence
 - Well
 - Creek
 - Driveway
 - Ranch Road
 - 50ft Contour
 - 10ft Contour
- Tree Cover**
- High : 255
 - Low : 0



APN127-011-035
36.90ac±

APN127-022-055
105.32ac±

North-Fallow
6.23ac±

Zinfandel
St George
1.95ac±

Zinfandel
St George
10.41ac±

Cabernet Sauvignon
St George
19.85ac±

Petite Syrah
1.79ac±

NOTE: THIS MAP WAS CREATED BY RAY CARLSON & ASSOCIATES, INC. STREET AND CREEK DATA PROVIDED BY COUNTY OF SONOMA, SUBJECT TO STANDARD CONDITIONS. ALL DATA IS DERIVED FROM SONOMA VEG MAP PRODUCT (Crest & Road Layer called to fit this data).

BOUNDARY SHOWN FOR REFERENCE PURPOSES ONLY. BOUNDARY LINES SHOWN ARE PER FIELD AND RECORD INFORMATION. NO LIABILITY IS ASSUMED OR IMPLIED FOR THE LOCATION OF BOUNDARY LINES HEREIN.

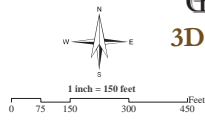
USE OF THIS PRODUCT IS COVERED BY COPYRIGHT LAWS.

RAY CARLSON & ASSOCIATES, INC. IS TO BE HELD HARMLESS FOR ANY AND ALL DISCREPANCIES OF DISTANCE AND GRAPHIC DISTORTION RELATING TO THE USE AND DEPENDENCE UPON THIS REPRESENTATION.

ORTHOPHOTOGRAHY (2011), BUILDING FOOTPRINT AND LEAR ELEVATION DATA (2011) PER SONOMA VEG MAP.

Appellations boundaries by Ray Carlson & Associates, Inc. per TRB description.

*ACREAGE PER BOUNDARY SURVEY IN PROGRESS BY RAY CARLSON AND ASSOCIATES, INC. (11/16/15)



GOLD VINEYARD ESTATE

3D Relief, Vineyard & Contour Map

16700 Gehricke Road
Sonoma, CA
APN 127-022-055 & 127-011-035



RAY CARLSON AND ASSOCIATES, INC.
Mapping for a Better World™

SURVEYING • MAPPING • GIS • CONSULTING
411 RUSSELL AVENUE SANTA ROSA, CALIFORNIA 95403
(707) 528-7649 • RCMAPS.COM
©2015, Ray Carlson and Associates, Inc.